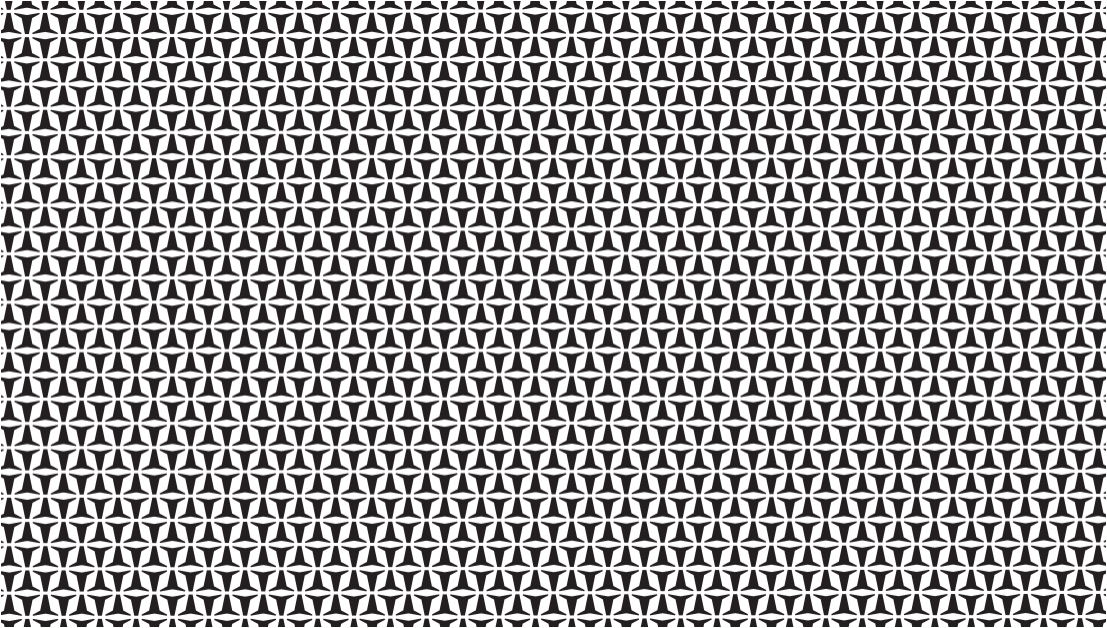




SWIFT EDGE™
REPLACEABLE BLADE KNIFE

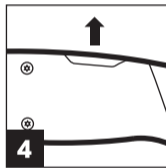
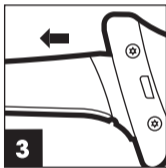
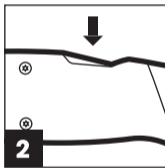
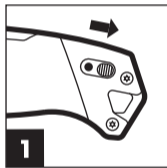
Fishing Fillet Kit
with TPR Handle

THANK YOU FOR YOUR PURCHASE



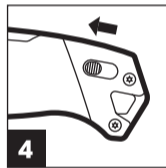
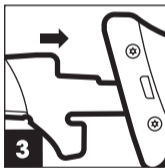
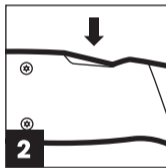
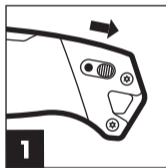
REMOVING A BLADE

1. Pull the Toggle Lock backward
2. Press and hold down the Blade Release
3. Slide the blade out
4. Let go of the Blade Release
5. Slide the Toggle Lock forward



INSERTING A BLADE

1. Pull the Toggle Lock backward
2. Press and hold down the Blade Release
3. Slide blade in until the Blade Release clicks into place
4. Pull the Toggle Lock forward to lock the blade in place
5. Gently pull on the blade to ensure it is secured



MAINTENANCE AND CARE

We recommend cleaning your Replaceable Blade Knife after every use. If needed, a small amount of oil can be used to lubricate the knife so it continues to work as intended.

WWW.TRUEUTILITY.US

1 YEAR PRODUCT GUARANTEE

If you experience a problem, please do not return to your local store. Contact our Customer Service team at 800-255-6061 or www.nebotools.com/contact.

Alliance Consumer Group
5650 Alliance Gateway Freeway
Fort Worth, TX 76177